

Index No. N-7

CERTIFICATE OF LOCATION OF GOVERNMENT CORNER

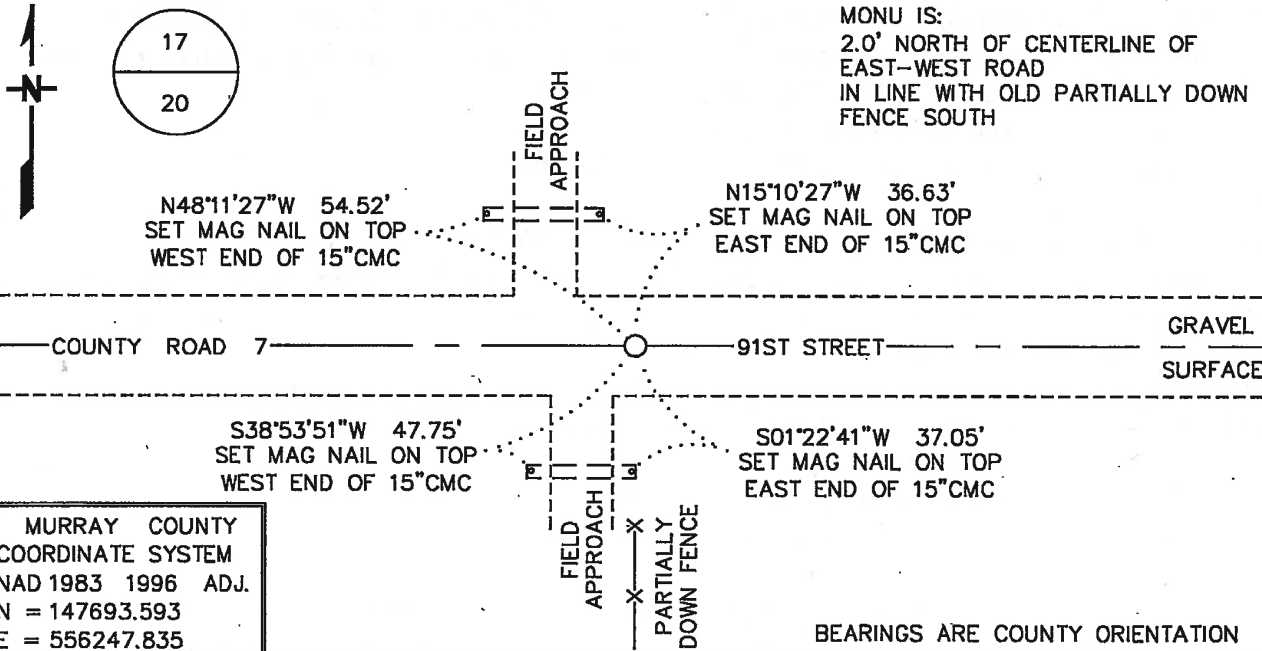
NORTH QUARTER Corner of Section 20, Township 106 N, Range 39 W
5TH Principal Meridian, State of Minnesota, County of MURRAY

At the corner location shown on the sketch:

■ On 11/2/16 found a 3/4" REBAR, DOWN 0.7'
DATE

left monument as found, lowered monument, removed monument (explain)

■ On 11/17/16 Placed a 3/4" X 24" REBAR WITH PLASTIC CAP STAMPED
DATE
"MN DNR LS 17003", DOWN 0.5', IN PLACE OF FOUND REBAR



Statement of evidence for this corner location is on back of this page.

FEBRUARY 2017
WMA00384

I hereby certify that this plan, specification, or report was prepared by me or under my direct supervision and that I am a duly Licensed Land Surveyor under the laws of the State of Minnesota.

SIGNATURE Bruce W. Shepherd DATE 3/23/17 License Number 17003
BRUCE W. SHEPHERD

North Quarter Corner of Section 20, Township 106 North, Range 39 West
Page 1 of 2

The DNR Division of Lands and Minerals contacted the following for survey information:

Website - mngeo.state.mn.us

Website - murray-countymn.com

Murray County Recorder's Office

Bueltel-Moseng Land Surveying, Inc. of Marshall

Zieske Land Surveying Inc. of Windom

Madsen Land Surveying Inc. of Fairmont

United States Department of the Interior Fish and Wildlife Service

- 1861 U.S. General Land Office notes, obtained from mngeo.state.mn.us, show the corner marked with a post and a charred stake in a raised mound with trench and pits as per instructions.
- 1908 Plat Books for Des Moines River Township, obtained from the County Recorder's Office,
1926 show an east-west road and property divisions north and south in the area of the corner.
- 1934 A Surveyor's Record Book page for Section 20, T106N, R39W, obtained from murray-countymn.com, shows a stone at the corner but does not indicate if it was found or set. The following ties are shown to the corner:
R.P. tack in telephone pole, southeast, 43.3 feet
R.P. tack in corner fence post, north, 36.5 feet
R.P. edge of steel post in guard rail, northwest, 57.1 feet
- 1961 January, field notes and map for a survey in the NW 1/4 of Section 20, T106N, R39W, by the Department of Conservation, in the possession of the DNR Division of Lands and Minerals, states that a railroad spike was placed at the corner on line between adjoining section corners and in line with fences north and south. The corner is shown:
2666.0 feet from the northwest corner of Section 20
2685.4 feet from the northeast corner of Section 20
- 1965 February, field notes for a survey in the SW 1/4 of Section 20, T106N, R39W, by the Department of Conservation, in the possession of the DNR Division of Lands and Minerals, states that the railroad spike from the 1961 survey was found at the corner.
- 2015 October 14, a sketch of a survey in Section 17, T106N, R39W, obtained from Bueltel-Moseng Land Surveying Inc. states that a 3/4 inch iron was found at the corner and that it fit the tie to the culvert, southwest by 0.1 of a foot. The corner is shown:
2665.884 feet from the northwest corner of Section 20
2683.53 feet from the northeast corner of Section 20
- 2015 October 19, a Certificate of Survey of the W 1/2 of the SW 1/4 of Section 17, T106N, R39W, by Jerry G. Johnson, LS 50343, obtained from Bueltel-Moseng Land Surveying Inc. shows that a 3/4 inch solid iron was found at the corner. The corner is shown:
2665.88 feet from the northeast corner of Section 19

North Quarter Corner of Section 20, Township 106 North, Range 39 West
Page 2 of 2

- 2016 November 2, the DNR Division of Lands and Minerals found a $\frac{3}{4}$ inch diameter rebar, down 0.5 of a foot, at the corner. Then an 8 foot north-south by 10 foot east-west by 3 foot deep hole was dug with a backhoe, the center being the found the found rebar, the bottom of the hole was scanned with an electronic metal detector but no metal attraction was obtained and no evidence of a stone or other kind of monument was found in the excavation. The rebar was found to be:
- a) on the center line of east-west County Road Number 7
 - b) in line with a partially down fence south
 - c) 2665.82 feet from a rebar found in the area of the northwest corner of Section 20
 - d) 2683.51 feet from the northeast corner of Section 20
 - e) 1.08 feet south of a straight line from the northeast corner of Section 20 to the rebar found in the area of the northwest corner of Section 20

Analysis of the above information led the DNR Division of Lands and Minerals to conclude that the found rebar marks the obliterated location of the corner. A $\frac{3}{4}$ inch by 24 inch rebar with a plastic cap stamped "MN DNR LS 17003" was set in place of the found rebar and ties were taken to it as shown on the sketch of reference ties. The found rebar was discarded.